

## Lodge 6x6

6 x 6 (5,823 x 5,823) - IE10080040

Basement size is shown in brackets

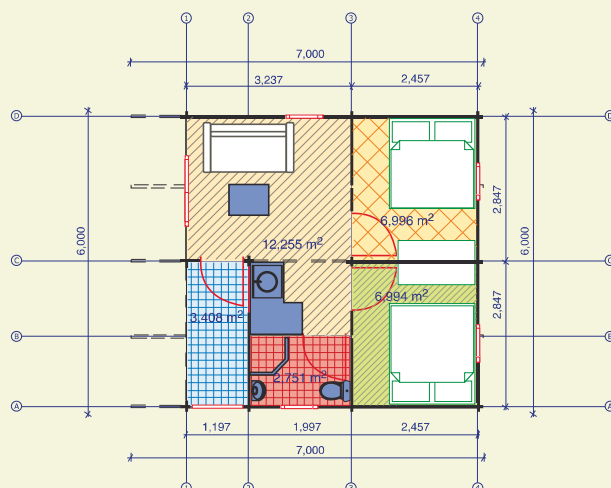
Fay with double roof construction - IE10080041

- Wall thickness 45 mm T&G;
- Double grooved interlock;
- Wall boards are flat faced with softly rounded edges;
- The corbel of the roof around the whole house;
- Large canopy - 1 m;
- Veranda with canopy 1,9 m;
- Double Glazed windows and doors;
- The doors and windows can be supplied either left, or right-hand;
- The cabin includes the roof and floor;
- Windows can be switched for ventilation.

Living area 29 m<sup>2</sup>

2 Bedrooms, WC/Bath. Kitchen, hall.

Double roof supplied as optional extras.



(45mm)